



# SURVIVOR® X C1D1 SAFETY RATED RIGHT-ANGLE FLASHLIGHT



Strong spring-loaded clip securely grabs onto belts and gear; D-ring provides forward hanging orientation



Battery life indicator in switch:  
 – Green indicates full charge  
 – Turns red when battery is nearing low voltage  
 – Flashes red continuously when 15 minutes left of battery life



New charger design:  
 – Survivor X securely locks into the charger - fits snugly in place  
 – Quick release latch for one-handed grab-and-go  
 – Easy to remove with gloved hands

**Material/Lens** Housing, base and battery housing made from high impact super tough nylon offering exceptional durability. All openings are O-ring sealed for IP67 waterproofing. Spring-loaded clip with built in D-ring easily attaches to belts and harnesses and reduces unwanted rotation. One way valve for case venting.

**Dims/Weight** Height: 7.06 in.; Height in charger: 8.67; Width: 2.85 in.; Diameter: 2.32 in.; Grip area: Height:3.60 in.; Thickness: 1.35 in.; Width: 2.20 in. Weight: 346g (with lithium ion); 363g (with AA Alkaline)

**Light Source** White LED impervious to shock with a 50,000 hour lifetime  
 Custom "Total Internal Reflection" optic for narrow beam and optimum peripheral illumination. Optional insertable black plug reduces peripheral illumination for improved smoke cutting ability or amber plug reduces eye fatigue.

**Output/Run time** Three lighting modes:  
 • High for a super-bright, smoke piercing beam: 250 lumens; 447m beam distance; 50,000 candela; runs 3.75 hours (Li-Ion); runs 5 hours (alkaline);  
 • Low for longer run time: 60 lumens; 237m beam distance; 14,000 candela; runs 15 hours (Li-Ion); runs 15 hours (alkaline)  
 • Flash for signaling: runs 8 hours continuous

**Switch** Push button switch designed for extremely long life.  
 Translucent rubber dome push button actuator provides easy operation even when wearing heavy gloves.

**Battery/Charging** 2.6Ahr Li-Ion Battery pack fully charges in 5 hours.  
 The translucent switch boot contains an integrated red/green battery status indicator.  
 Charger indicator turns red when charging, turns green when fully charged.  
*The Survivor® X is not compatible with legacy Survivor® chargers.*

**INDICATOR:**  
 Solid green for 5 seconds: Battery is ready for use.  
 Solid red: 45 minutes of battery life remaining.

**Features**

- Reduced bezel length to minimize snag hazards
- D-ring provides forward hanging orientation
- Updated battery door design for improved operation and seal.
- IP67 rated; dust-tight and waterproof to 1m for 30 minutes; 2m impact resistance tested
- Strong Spring-loaded clip grabs onto belts and gear

**Approvals** Class I & II, Division 1, Groups A,B,C,D,E,F,G; Class III, T-Code: T3/T4  
 Flashlight meets 500°F requirements of NFPA 1971-8.6 (2013)  
 Charger meets requirements of NFPA 1901-14.1.10.2 (2016) mounted in any position



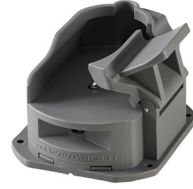
**Warranty** Streamlight warrants this product to be free of defects for a lifetime of use except for batteries and bulbs, abuse and normal wear. We will repair, replace or refund the purchase price of this product should we determine it to be defective. This limited lifetime warranty also excludes rechargeable batteries, chargers, switches and electronics which have a 2 year warranty with proof of purchase. THIS IS THE ONLY WARRANTY, EXPRESSED OR IMPLIED, INCLUDING ANY WARRANTY OF MERCHANTABILITY OR FITNESS FOR A PARTICULAR PURPOSE. INCIDENTAL, CONSEQUENTIAL OR SPECIAL DAMAGES ARE EXPRESSLY DISCLAIMED EXCEPT WHERE SUCH LIMITATION IS PROHIBITED BY LAW. You may have other specific legal rights which vary by jurisdiction. Visit [streamlight.com](http://streamlight.com) for full warranty information.

| Description                      | Orange         |        | Yellow         |        |
|----------------------------------|----------------|--------|----------------|--------|
|                                  | UPC            | ITEM#  | UPC            | ITEM#  |
| Survivor X - 120V/100V AC/12V DC | 080926-90952-6 | #90952 | 080926-90962-5 | #90962 |
| Survivor X - 230V AC/12V DC      | 080926-90953-3 | #90953 | 080926-90963-2 | #90963 |
| Survivor X - Alkaline            | 080926-90950-2 | #90950 | 080926-90960-1 | #90960 |

90910  
90911  
90912



90345



90341



90342



| Description  | UPC            | Item # |
|--|----------------|--------|
| 120V/100V AC Bank Charger - Survivor X                       | 080926-90910-6 | 90910  |
| 230V AC Bank Charger - Survivor X                            | 080926-90911-3 | 90911  |
| 12V DC Bank Charger - Survivor X                             | 080926-90912-0 | 90912  |
| Charger Holder - Survivor X                                  | 080926-90345-6 | 90345  |
| Lithium Ion Battery - Survivor X C1D1                        | 080926-90341-8 | 90341  |
| Battery Carrier - Survivor X (for alkaline or SL-B26 models) | 080926-90342-5 | 90342  |
| Smoke Cutter® Plug Kit*                                      |                | 908019 |

\* image not available